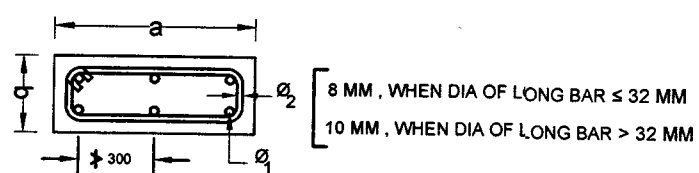
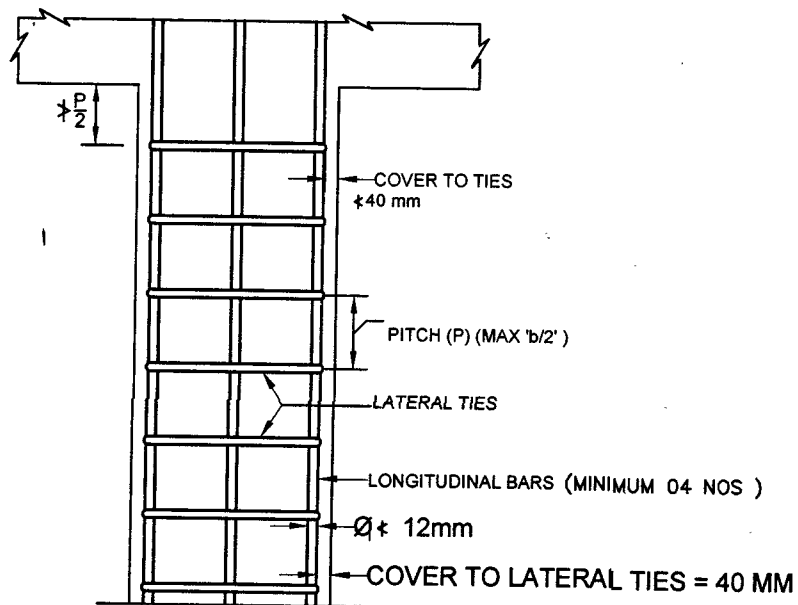
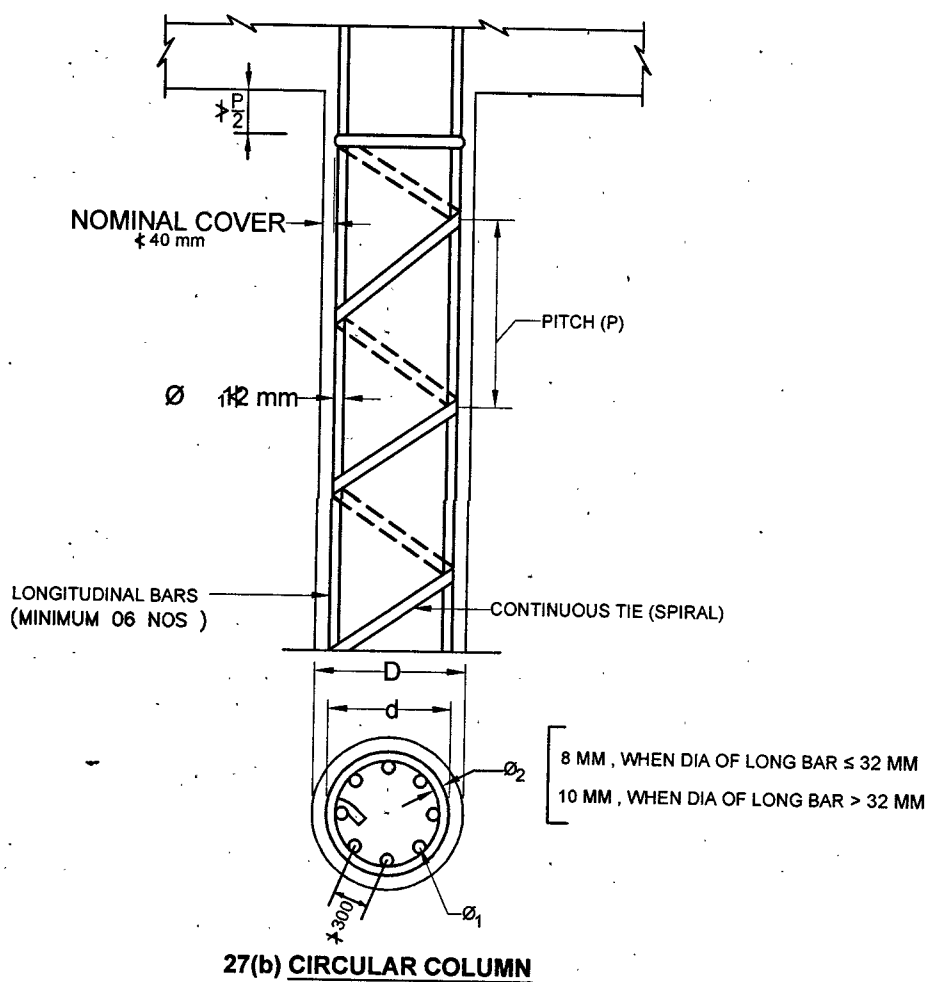


**COLUMNS**

- 71. THE BARS SHALL NOT BE LESS THAN 12 mm IN DIAMETER AND SPACING OF BARS ALONG THE PERIPHERY OF THE COLUMN SHALL NOT EXCEED 300 mm. (REF FIG.-27)
- 72. UNLESS SPECIFIED OTHERWISE, THE DETAILS OF COLUMN TIE IN RECTANGULAR COLUMNS AND CIRCULAR COLUMNS SHALL BE AS PER FIG.- 27(a) AND FIG.-27(b). RESPECTIVELY.

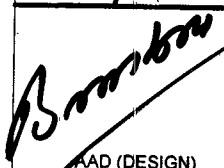



27(a) RECTANGULAR COLUMN



27(b) CIRCULAR COLUMN

**FIG.-27: BAR SPACING REQUIREMENTS IN COLUMN**

SNO.	DATE	DESCRIPTION	DY.DIR	DIR(DES)
REVISIONS				
DATE	30 MAY 2024	CHIEF ENGINEER JALANDHAR ZONE		
DRN	POOJA T			
TCD				
CKD				
TYPICAL R.C.C. DETAILS				
SCALE	AS SHOWN	DETAILING : COLUMN		
SHT. SIZE	A3			
 DIR (DESIGN)		DRG. NO.	SHEET NO.	
 DIR (DESIGN) FOR CHIEF ENGINEER		DRG NO CEJZ / STD- 422/24	16/34	